

IEC | **Model MTP180MA2F-B35**
MFG PN: T180M-2

Model MTP180MA2F-B35

Product Data Package



| MODEL | HP | RPM | VOLTAGE | PHASE | Hz | FRAME | MOUNT | ENCLOSURE |
|----------------|----|------|---------|-------|----|-------|-------|-----------|
| MTP180MA2F-B35 | 30 | 3550 | 575 | 3 | 60 | 180M | B35 | TEFC |

Toronto

TOLL FREE 1.888.286.1820
PHONE 905.829.1001
EMAIL info@techttopcanada.com

Montreal

TOLL FREE 1.844.354.5111
PHONE 514.354.1002
EMAIL infoQC@techttopcanada.com

Moncton

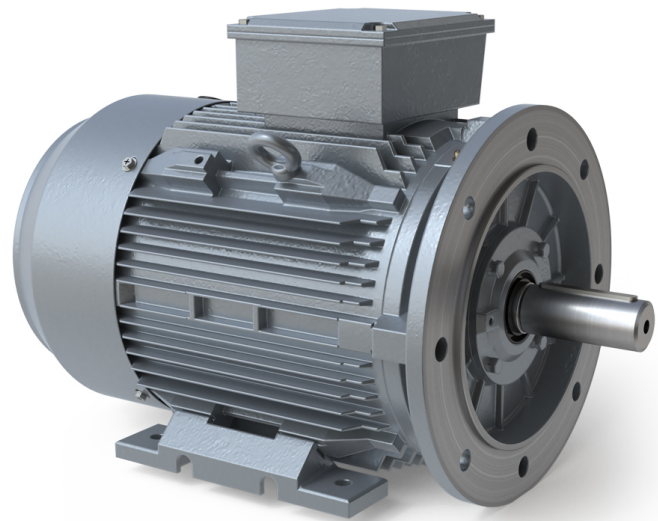
PHONE 506.386.5794
EMAIL infoNB@techttopcanada.com

Winnipeg

PHONE 204.633.2779
EMAIL infoMB@techttopcanada.com

Vancouver

PHONE 604.525.1551
EMAIL infoBC@techttopcanada.com



Index

| | |
|-------------------------------|-----|
| Motor General Data Sheet | P 2 |
| Nameplate Information | P 3 |
| Technical Performance Data | P 4 |
| Motor General Wiring Diagram | P 5 |
| Motor General Outline Drawing | P 6 |



Model MTP180MA2F-B35
MFG PN: T180M-2

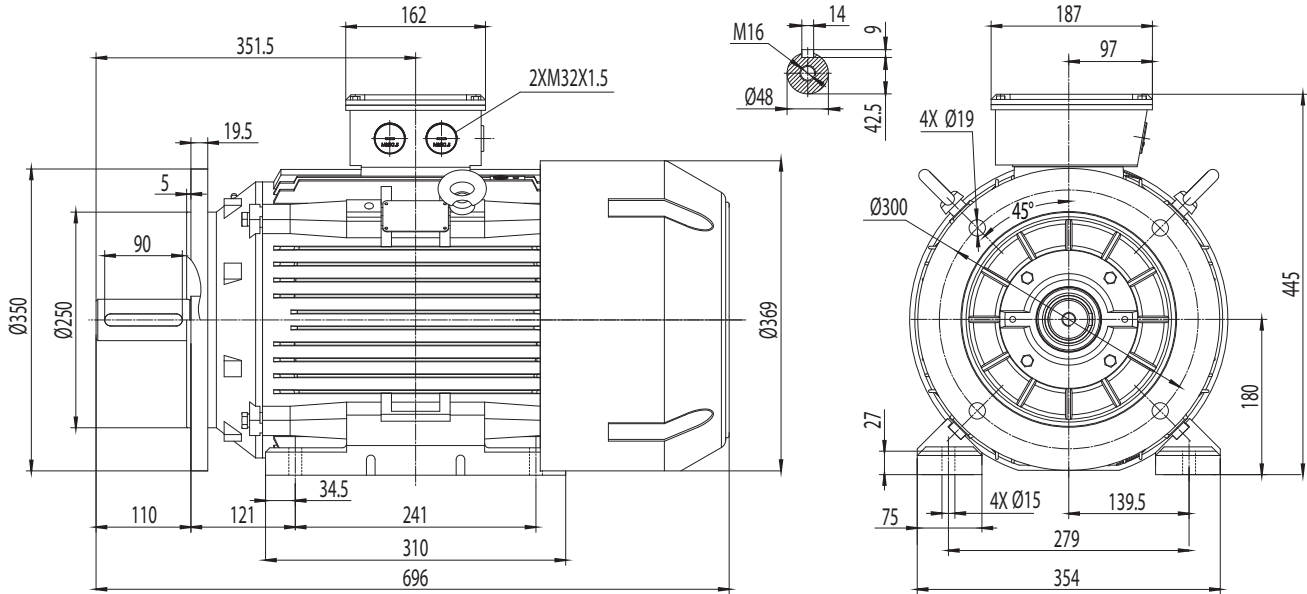
| ELECTRICAL DATA | | |
|-------------------------------------|--------|----------------------------|
| Rated Motor Output Power | 30 | HP |
| | 22 | kW |
| Rated Motor Speed | 3550 | r/min 60Hz |
| | - | r/min 50Hz |
| Rated Motor Voltage (+/-10%) | 575 | V/60Hz |
| | - | V/50Hz |
| Rated Motor Current | 26.77 | A (I _n) @ 60Hz |
| | - | A (I _n) @ 50Hz |
| Phase | 3 | ∅ |
| Locked Rotor Current @ High Voltage | 284.47 | A (I _n) @ 60Hz |
| FI Current @ 208V | - | A (I _n) @ 60Hz |
| Service Factor | 1.15 | @ 60Hz |
| | 1 | @ 50Hz |
| KVA Code | J | 60Hz |
| | - | 50Hz |
| Nominal Efficiency | 91.7 | % @ 60Hz |
| Nominal Power Factor | 0.9 | cosΦ @ 60Hz |
| Leads (Qty, Size) | 6 | 10 |
| Connection | D | - |
| Coil Resistance | - | Ω |
| Start Capacitor | - | μF/V |
| Run Capacitor | - | μF/V |
| VFD DUTY (S.F. 1.0) | | |
| | RATIO | Hz |
| Variable Torque | 30:1 | 2 - 60 |
| Constant Torque | 15:1 | 4 - 60 |
| FULL LOAD TEMPERATURE RISE | | |
| Full Load Temperature Rise | 54 | °C @ 60Hz |
| | - | °C @ 50Hz |

| GENERAL DATA | | |
|---|------------------|-----------|
| Frame Size | 180M | |
| Enclosure | TEFC | |
| Mounting | B35 | |
| Approximate Weight (lbs.) | 419 lbs. | |
| Casing Material / Fan Cover | Cast Iron | Cast Iron |
| Shaft Material | - | |
| NEMA Design | - | |
| Degree of Protection (IP) | 55 | |
| Insulation Class / Temp Rise (60Hz) | F | B |
| Tropicalization | YES | |
| Duty | Cont. / S1 | |
| Conduit Box Location | 2-M32X1.5 | |
| Feet Removable / Double Drilled | YES | NO |
| Paintwork | 7024 | |
| | Graphite Gray | |
| MECHANICAL DATA | | |
| Bearing DE Side | 6311 C3 | |
| Bearing ODE Side | 6311 C3 | |
| Grease Type | Mobil Polyrex EM | |
| Compensation Ring (wavy washer) | NDE | |
| Moment of Inertia (lb-ft ²) | - | |
| Sound Pressure @ 3 FT dBA | - | |
| SITE CONDITIONS | | |
| Ambient Temperature (°C) | 40 | |
| Meters Above Sea Level (MASL) | 1000 | |
| HAZARDOUS LOCATIONS | | |
| CSA Certified | Compliant Only | |
| Temperature Code | - | - |

Questions? Call 1.888.286.1820



Model MTP180MA2F-B35
 MFG PN: T180M-2



| NAMEPLATE DATA | 60Hz | 50Hz |
|----------------------------|------------|-------|
| HP/kW | 30/22 | 30/22 |
| RPM | 3550 | - |
| Voltage | 575 | - |
| Full Load Amps | 26.77 | - |
| Service Factor | 1.15 | 1 |
| KVA Code | J | - |
| Full Load Amps (208V) | - | - |
| Nominal Efficiency | 91.7 | - |
| Nominal Power Factor | 0.9 | - |
| Design | - | |
| Frame | 180M | |
| Enclosure Type | TEFC | |
| IP Rating | 55 | |
| Duty | Cont. / S1 | |
| Insulation Class | F | |
| Ambient Rating | 40 | |
| Drive End Bearing | 6311 C3 | |
| Opposite Drive End Bearing | 6311 C3 | |
| Weight (lbs) | 419 | |

NAMEPLATE LAYOUT

TECHTOP INDUSTRIAL THREE PHASE IE3 MOTOR
 INVERTER DUTY 15:1 CT 30:1 VT - 1.0 SF

MODEL: _____ TECHTOPCANADA.COM

| | | | | |
|--|------|------|---------------------|-----------|
| HP/KW | 60Hz | 50Hz | MFG PN | _____ |
| RPM | | | MFG DATE | _____ |
| VOLT | | | SER # | _____ |
| FLA | | | DESIGN | _____ |
| SF | | | FRAME | _____ |
| KVA CODE | | | ENCL | _____ |
| NOM.EFF | | | IP | _____ |
| BEARING SIZE | | | DUTY | _____ |
| DE | ODE | | INS CL | _____ |
| GREASE: MOBIL POLYREX EM | | | AMB | _____ |
| MADE IN CHINA CLASS 1, DIV 2, GROUPS A, B, C AND D | | | WEIGHT | _____ lbs |
| | | | IEEE 45 MARINE DUTY | |

| VFD DUTY (S.F. 1.0) | RATIO | Hz* |
|---------------------|-------|--------|
| Variable Torque | 30:1 | 2 - 60 |
| Constant Torque | 15:1 | 4 - 60 |

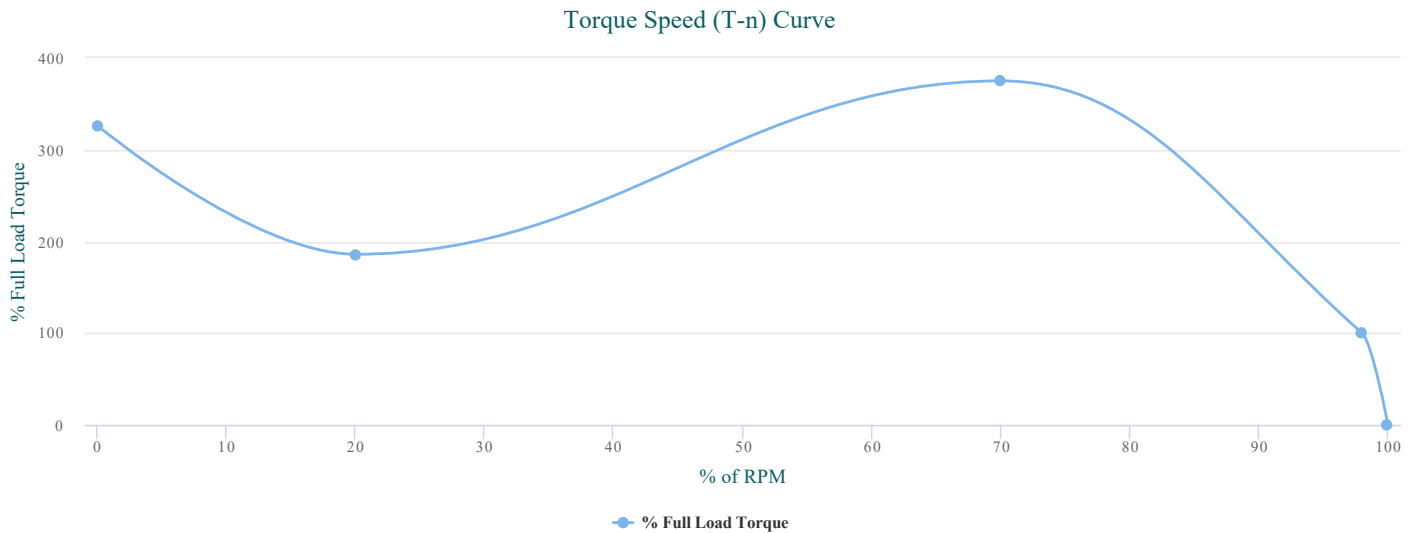
*For max speed please contact Techtop Canada

| HAZARDOUS LOCATIONS | COMPLIANT ONLY |
|---------------------|----------------------|
| Class / Division | Class I, Division II |
| Groups | A, B, C & D |

Questions? Call 1.888.286.1820



Model MTP180MA2F-B35
 MFG PN: T180M-2



Highcharts.com

PERFORMANCE LOAD VALUES, HIGH VOLTAGE, 60Hz

TYPICAL PERFORMANCE - NOT GUARANTEED VALUES

| TORQUE VALUES | TORQUE (lb-ft) | TORQUE (% FULL LOAD) | PERFORMANCE VALUES | |
|---------------------|----------------|----------------------|----------------------|--------|
| Locked Rotor Torque | 144.7 | 326 | Start Configuration | DOL |
| Pull-Up Torque | 82.6 | 186 | Starting Current (A) | 284.47 |
| Breakdown Torque | 166.4 | 375 | No-Load Current (A) | 9.6 |
| Full Load Torque | 44.4 | 100 | No-Load Power Factor | 0.09 |

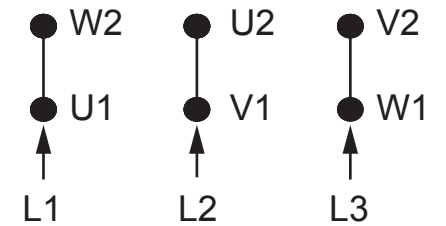
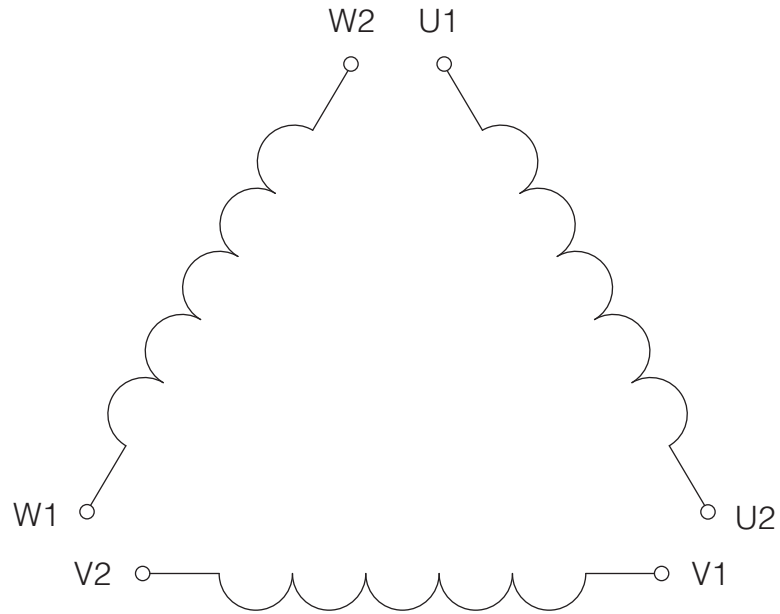
| % OF RATED LOAD | 25 | 50 | 75 | 100 | 125 | S.F. 1.25 |
|---------------------|------|-------|-------|-------|-------|-----------|
| Line Amperes (A) | 11.9 | 16 | 21.3 | 27.5 | 34 | 31.2 |
| Efficiency (%) | 85.9 | 91.4 | 92.9 | 93.2 | 93.1 | 93.1 |
| Speed (r/min) | 3591 | 3581 | 3571 | 3560 | 3549 | 3554 |
| Power Factor (cosΦ) | 0.55 | 0.77 | 0.85 | 0.88 | 0.89 | 0.88 |
| Input Power (kW) | 6.52 | 12.25 | 18.09 | 24.03 | 30.09 | 27.5 |

Questions? Call 1.888.286.1820



Model MTP180MA2F-B35

MFG PN: T180M-2



SINGLE VOLTAGE

NOTES:

1. CCW ROTATION FACING ODE FOR CONNECTIONS SHOWN
2. TO REVERSE ROTATION, SWAP ANY TWO INPUT LINES
3. WHEN MOTOR IS IN F1 POSITION, LEADS INDICATED WITH "*" EXIT THE CASING ABOVE THE CENTER LINE OF THE MOTOR, THE REMAINING LEADS EXIT BELOW THE CENTER LINE
4. LEADS MUST BE NUMBERED AND COLORED AS SHOWN
5. DIAGRAMS FOR REFERENCE ONLY



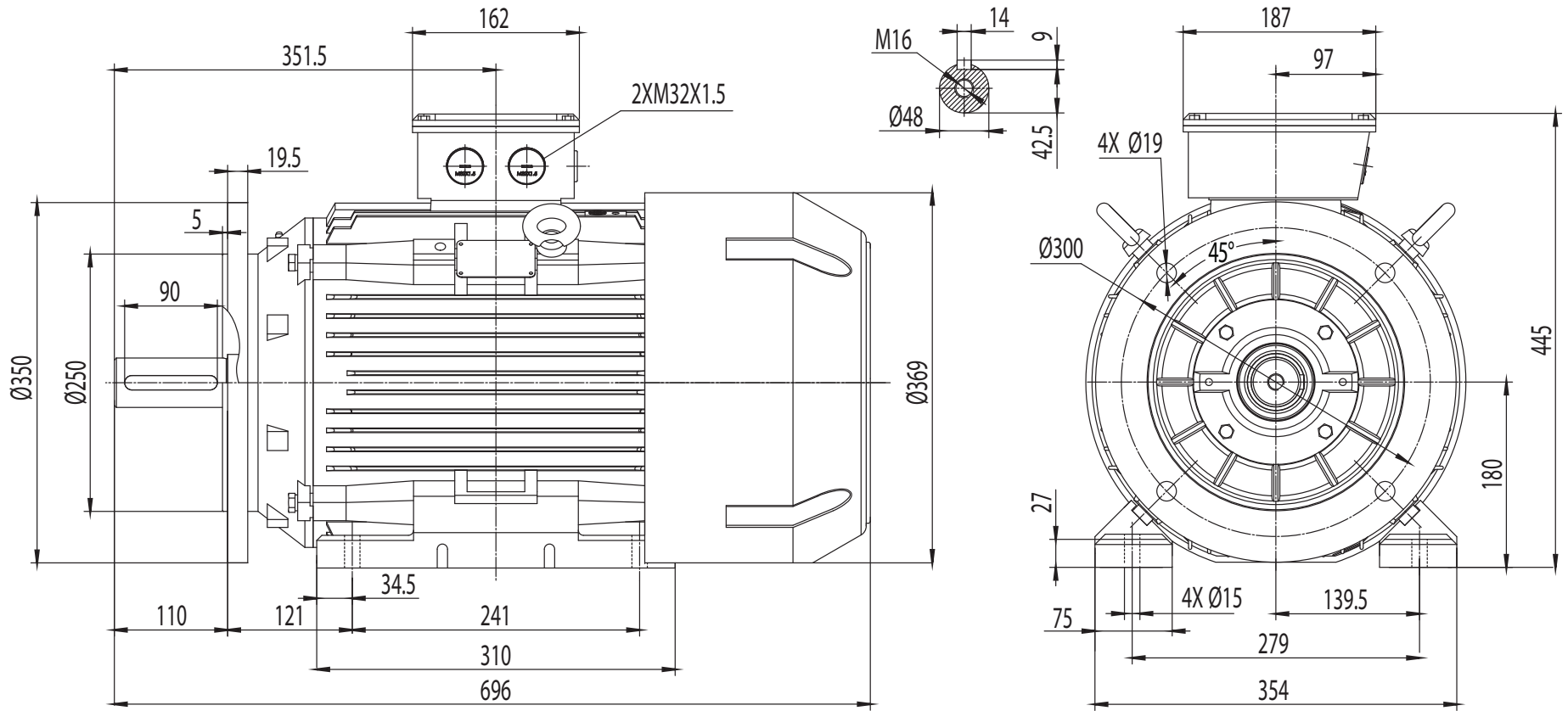
IEC 3Ø D 6-Lead/6-Post Single Voltage

| | | | |
|----------------------------|-----------|---------------------------|----------|
| DRAWING NUMBER: | IEC-3-6-D | ISSUED DATE | 07/04/23 |
| CONNECTION: | D | METRIC IE3 PREMIUM MOTORS | |
| NUMBER OF LEADS: | 6 | | |
| THERMAL PROTECTION: | Optional | | |



Model MTP180MA2F-B35

MFG PN: T180M-2



IE3 TEFC 180M

DRAWING NUMBER:

GR3-CI-TF-180MB35-CFC

ISSUED DATE

07/04/23

DIMENSIONS:

mm

MOUNTING:

B35

CASING MATERIAL:

Cast Iron

METRIC IE3 PREMIUM MOTORS