

**IEC** | **Model MTP160LA2F**  
MFG PN: T160L-2

# Model MTP160LA2F

## Product Data Package



MODEL	HP	RPM	VOLTAGE	PHASE	Hz	FRAME	MOUNT	ENCLOSURE
MTP160LA2F	25	3550	575	3	60	160L	B3	TEFC

### Toronto

TOLL FREE 1.888.286.1820  
PHONE 905.829.1001  
EMAIL info@techttopcanada.com

### Montreal

TOLL FREE 1.844.354.5111  
PHONE 514.354.1002  
EMAIL infoQC@techttopcanada.com

### Moncton

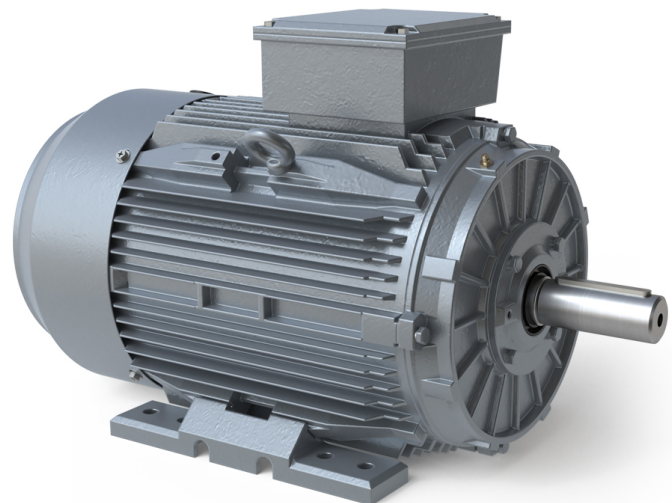
PHONE 506.386.5794  
EMAIL infoNB@techttopcanada.com

### Winnipeg

PHONE 204.633.2779  
EMAIL infoMB@techttopcanada.com

### Vancouver

PHONE 604.525.1551  
EMAIL infoBC@techttopcanada.com



### Index

Motor General Data Sheet	P 2
Nameplate Information	P 3
Technical Performance Data	P 4
Motor General Wiring Diagram	P 5
Motor General Outline Drawing	P 6



**Model MTP160LA2F**  
**MFG PN: T160L-2**

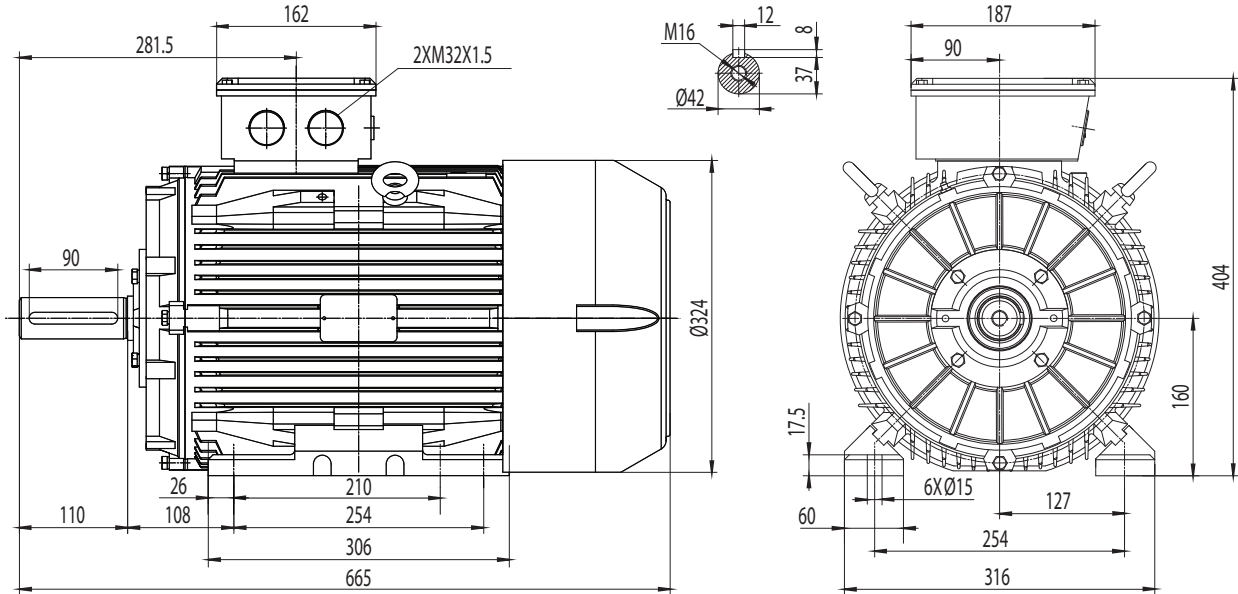
ELECTRICAL DATA		
Rated Motor Output Power	25	HP
	18.5	kW
Rated Motor Speed	3550	r/min 60Hz
	-	r/min 50Hz
Rated Motor Voltage (+/-10%)	575	V/60Hz
	-	V/50Hz
Rated Motor Current	22.48	A (I <sub>n</sub> ) @ 60Hz
	-	A (I <sub>n</sub> ) @ 50Hz
Phase	3	∅
Locked Rotor Current @ High Voltage	259.44	A (I <sub>n</sub> ) @ 60Hz
FI Current @ 208V	-	A (I <sub>n</sub> ) @ 60Hz
Service Factor	1.15	@ 60Hz
	1	@ 50Hz
KVA Code	H	60Hz
	-	50Hz
Nominal Efficiency	91.7	% @ 60Hz
Nominal Power Factor	0.9	cosΦ @ 60Hz
Leads (Qty, Size)	6	10
Connection	D	-
Coil Resistance	-	Ω
Start Capacitor	-	μF/V
Run Capacitor	-	μF/V
VFD DUTY (S.F. 1.0)		
	RATIO	Hz
Variable Torque	30:1	2 - 60
Constant Torque	15:1	4 - 60
FULL LOAD TEMPERATURE RISE		
Full Load Temperature Rise	60	°C @ 60Hz
	-	°C @ 50Hz

GENERAL DATA		
Frame Size	160L	
Enclosure	TEFC	
Mounting	B3	
Approximate Weight (lbs.)	353 lbs.	
Casing Material / Fan Cover	Cast Iron	Cast Iron
Shaft Material	-	
NEMA Design	-	
Degree of Protection (IP)	55	
Insulation Class / Temp Rise (60Hz)	F	B
Tropicalization	YES	
Duty	Cont. / S1	
Conduit Box Location	2-M32X1.5	
Feet Removable / Double Drilled	YES	YES
Paintwork	7024	
	Graphite Gray	
MECHANICAL DATA		
Bearing DE Side	6309 C3	
Bearing ODE Side	6309 C3	
Grease Type	Mobil Polyrex EM	
Compensation Ring (wavy washer)	NDE	
Moment of Inertia (lb-ft <sup>2</sup> )	-	
Sound Pressure @ 3 FT dBA	-	
SITE CONDITIONS		
Ambient Temperature (°C)	40	
Meters Above Sea Level (MASL)	1000	
HAZARDOUS LOCATIONS		
CSA Certified	Compliant Only	
Temperature Code	-	-

**Questions? Call 1.888.286.1820**



**Model MTP160LA2F**  
**MFG PN: T160L-2**



NAMEPLATE DATA	60Hz	50Hz
HP/kW	25/18.5	25/18.5
RPM	3550	-
Voltage	575	-
Full Load Amps	22.48	-
Service Factor	1.15	1
KVA Code	H	-
Full Load Amps (208V)	-	-
Nominal Efficiency	91.7	-
Nominal Power Factor	0.9	-
Design	-	
Frame	160L	
Enclosure Type	TEFC	
IP Rating	55	
Duty	Cont. / S1	
Insulation Class	F	
Ambient Rating	40	
Drive End Bearing	6309 C3	
Opposite Drive End Bearing	6309 C3	
Weight (lbs)	353	

NAMEPLATE LAYOUT			
		INDUSTRIAL THREE PHASE IE3 MOTOR INVERTER DUTY 15:1 CT 30:1 VT - 1.0 SF	
MODEL			TECHTOPCANADA.COM
	60Hz	50Hz	MFG PN
HP/KW			MFG DATE
NEMA Premium RPM			SER #
VOLT			DESIGN
FLA			FRAME
SF			ENCL
KVA CODE			IP
NOM.EFF			DUTY
BEARING SIZE			INS CL
DE	ODE		AMB
GREASE: MOBIL POLYREX EM			WEIGHT
MADE IN CHINA CLASS 1, DIV 2, GROUPS A, B, C AND D			lbs
			IEEE 45 MARINE DUTY

VFD DUTY (S.F. 1.0)	RATIO	Hz*
Variable Torque	30:1	2 - 60
Constant Torque	15:1	4 - 60

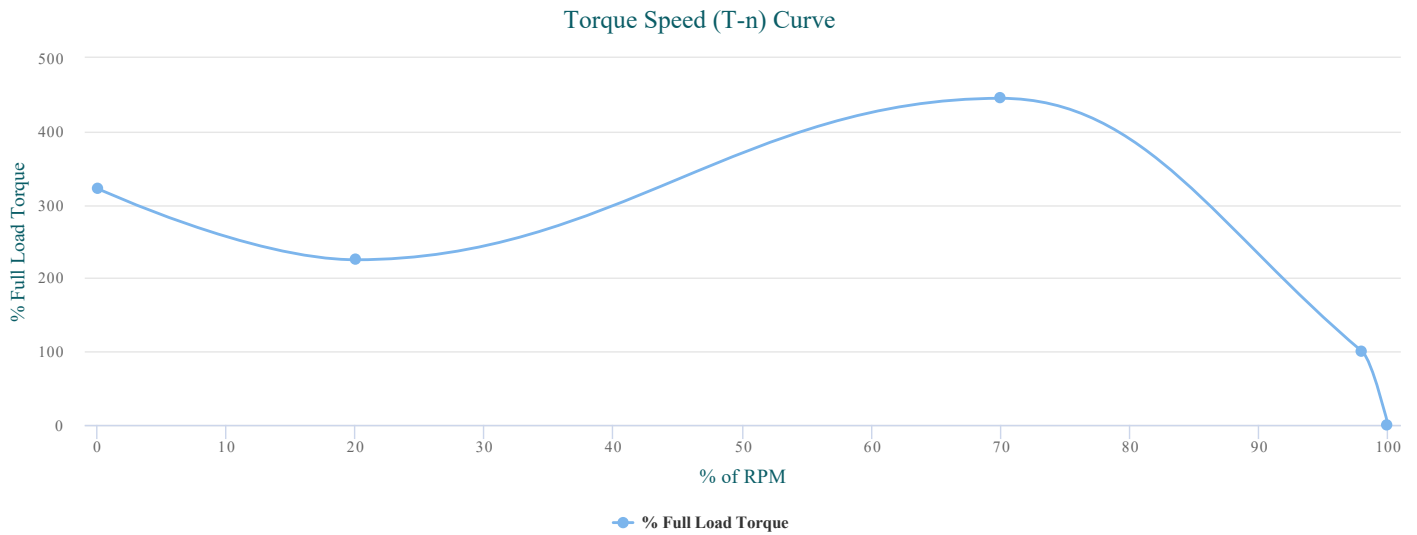
\*For max speed please contact Techtop Canada

HAZARDOUS LOCATIONS	COMPLIANT ONLY
Class / Division	Class I, Division II
Groups	A, B, C & D

**Questions? Call 1.888.286.1820**



**Model MTP160LA2F**  
 MFG PN: T160L-2



Highcharts.com

**PERFORMANCE LOAD VALUES, HIGH VOLTAGE, 60Hz**

**TYPICAL PERFORMANCE - NOT GUARANTEED VALUES**

TORQUE VALUES	TORQUE (lb-ft)	TORQUE (% FULL LOAD)	PERFORMANCE VALUES	
Locked Rotor Torque	119.1	322	Start Configuration	DOL
Pull-Up Torque	83.2	225	Starting Current (A)	259.44
Breakdown Torque	164.6	445	No-Load Current (A)	9.8
Full Load Torque	37	100	No-Load Power Factor	0.08

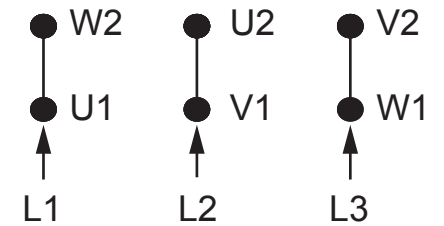
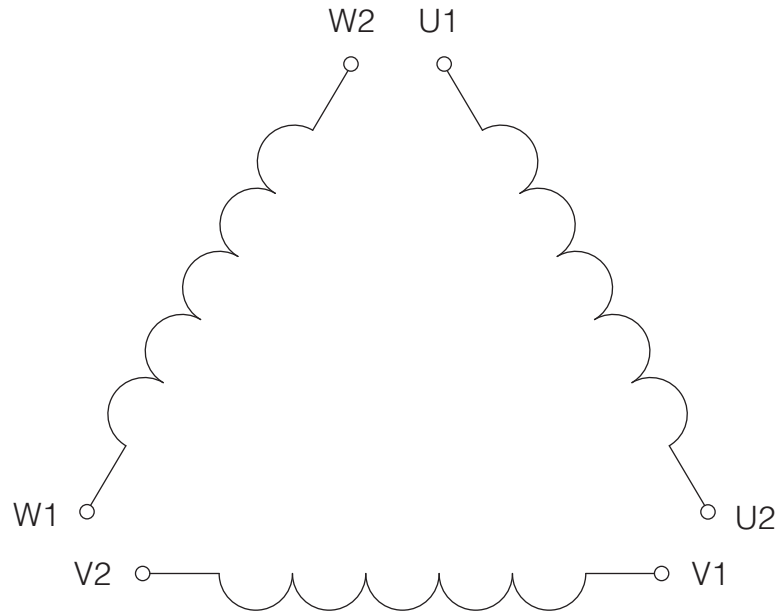
% OF RATED LOAD	25	50	75	100	125	S.F. 1.25
Line Amperes (A)	11	14.5	18.7	23.5	28.6	26.4
Efficiency (%)	85.1	90.8	92.5	92.9	92.7	-
Speed (r/min)	3592	3583	3575	3565	3556	3559
Power Factor (cosΦ)	0.5	0.71	0.81	0.86	0.88	0.87
Input Power (kW)	5.46	10.24	15.09	20.03	25.07	22.92

**Questions? Call 1.888.286.1820**



Model **MTP160LA2F**

MFG PN: T160L-2



**SINGLE VOLTAGE**

NOTES:

1. CCW ROTATION FACING ODE FOR CONNECTIONS SHOWN
2. TO REVERSE ROTATION, SWAP ANY TWO INPUT LINES
3. WHEN MOTOR IS IN F1 POSITION, LEADS INDICATED WITH "\*" EXIT THE CASING ABOVE THE CENTER LINE OF THE MOTOR, THE REMAINING LEADS EXIT BELOW THE CENTER LINE
4. LEADS MUST BE NUMBERED AND COLORED AS SHOWN
5. DIAGRAMS FOR REFERENCE ONLY



**IEC 3Ø D 6-Lead/6-Post Single Voltage**

**DRAWING NUMBER:**

IEC-3-6-D

**CONNECTION:**

D

**NUMBER OF LEADS:**

6

**THERMAL PROTECTION:**

Optional

**ISSUED DATE**

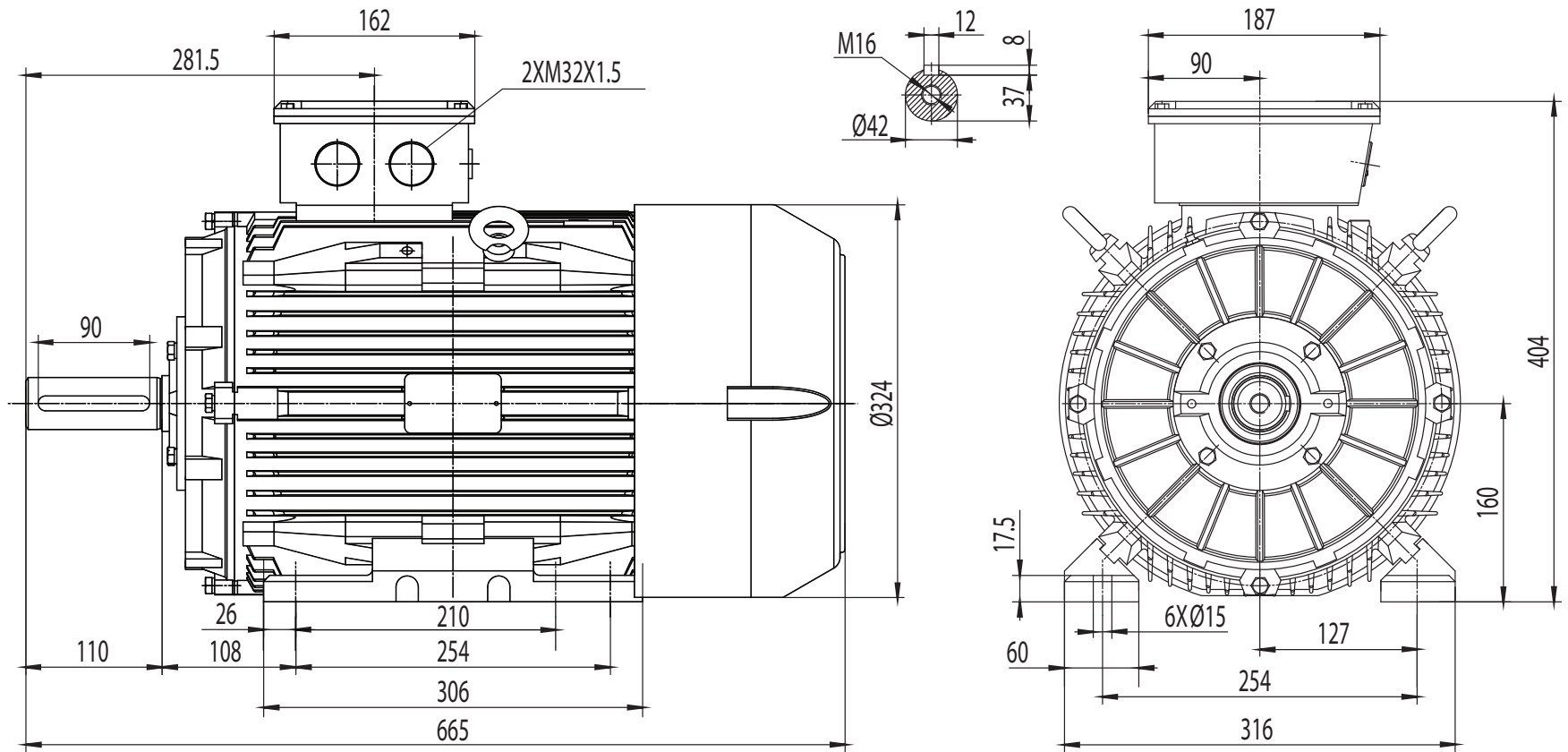
05/05/23

METRIC IE3 PREMIUM MOTORS



Model MTP160LA2F

MFG PN: T160L-2



IE3 TEFC 160L

DRAWING NUMBER:

GR3-CI-TF-160LB3-CFC

ISSUED DATE

05/05/23

DIMENSIONS:

mm

MOUNTING:

B3

CASING MATERIAL:

Cast Iron

METRIC IE3 PREMIUM MOTORS